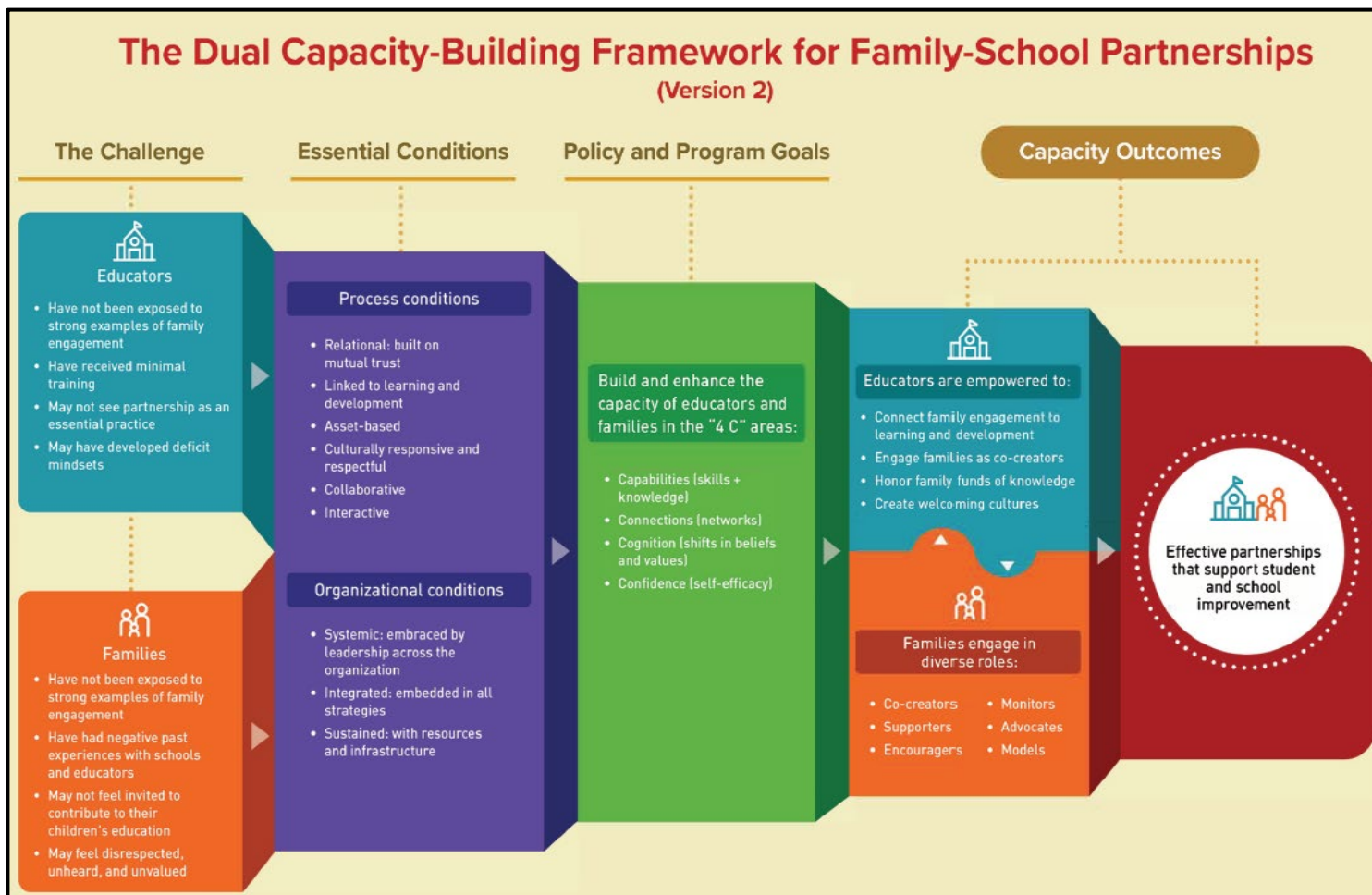


Dual Capacity-Building Framework for Family-School Partnerships



The Dual Capacity-Building Framework was developed by the U.S. Department of Education and was designed to help schools and districts create initiatives that build both the capacity of its educators and its families through partnership, with the mutual goal of student achievement and school improvement. With the growing importance of family engagement, schools must build effective, sustainable family and school partnerships.

This framework is designed to act as a scaffold for the development of family engagement strategies, policies, and programs. It is not intended to be a blueprint to fit particular contexts, but should be seen as a *compass*, laying out the goals and conditions necessary to chart a path toward effective family engagement efforts that are linked to student achievement and school improvement.

Additional Information:

- Resource link – Dual Capacity Framework
http://www.esc16.net/page/title1swi.USDE_Frameworks

Title I, Part A PFE Statewide Initiative
at Region 16 Education Service Center

Funded by Texas Education Agency



t1pfe@esc16.net